



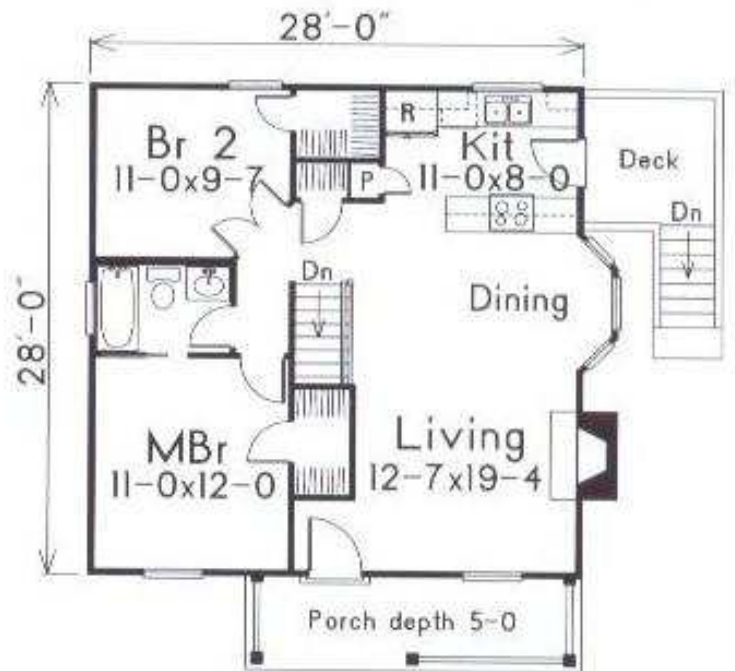
Plan #528-007D-0042

Small Home Is Remarkably Spacious

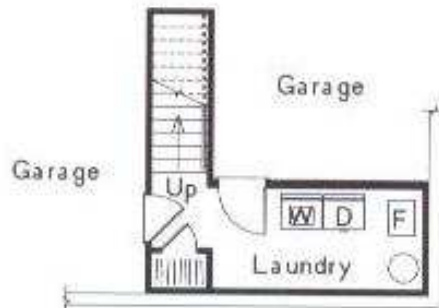
Living Area: 914 total square feet
 Foundation: Basement foundation
 Price Code: AA

Special features

- Large porch for leisure evenings
- Dining area with bay window, open stair and pass-through kitchen create openness
- Basement includes generous garage space, storage area, finished laundry and mechanical room
- 2 bedrooms, 1 bath, 2-car drive under garage



First Floor
796 sq. ft.



Lower Level
118 sq. ft.